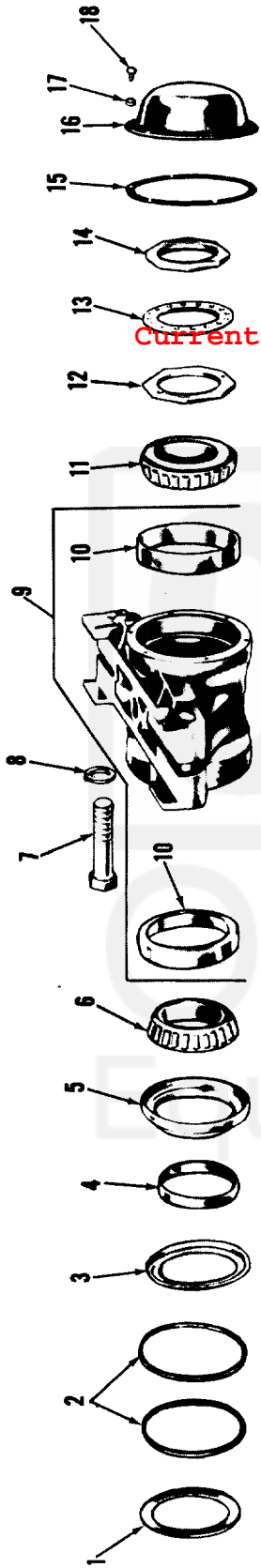


Current part is item (3) on diagram. Available at www.oshkoshequipment.com

(1) SMR Code	(2) Federal Stock Number	(3) Description	(4) Unit of Meas.	(5) Qty	(6) 15-day Maintenance In	(7) Organizational alw	(7) Illustration No.	(a) Figure No.	(b) Item No.		
Reference number & mfg. code			Usable on code		(a)	(b)	(c)	(d)			
					1-5	6-20	21-50	51-100			
1601-SPRINGS-CONTINUED											
PAOZZ	5310-734-6957	PLATE: GUIDE BRACKET 7346957 (19207)	HA,JA,BD	EA	4	*	*	*	*	147	9
PAOZZ	2510-277-9786	SPRING ASSEMBLY, LEAF: REAR 8327139 (19207)	HA,JA,BD	EA	2	*	*	*	*	147	10
PAOZZ	5306-446-8762	BOLT, MACHINE: LEAF SPRING 7017002 (19207)	HA,JA,BD	EA	2	*	*	*	*	147	11
PAOZZ	5310-700-7127	NUT: SADDLE "U" BOLT 7007127 (19207)	HA,JA,BD	EA	8	*	*	*	*	147	12
PAOZZ	5310-926-5885	WASHER,LOCK: SADDLE "U" BOLT MS35340-53 (96906)	HA,JA,BD	EA	8	*	*	*	*	147	13
PAOZZ	5310-732-0560	NUT,PLAIN,HEXAGON: LEAF SPRING MS51968-14 (96906)	A	EA	2	*	*	*	*	147	14
PAOZZ	5310-740-9615	WASHER,FLAT: 7409615 (19207)	A	EA	2	*	*	*	*	148	1
PAOZZ	5330-740-9312	WASHER,NONMETALLIC: 7409312 (19207)	A	EA	3	*	*	*	*	148	2
PAOZZ	2510-740-9606	RETAINER, PACKING: SEAT BEARING FELT 7409606 (19207)	A	EA	2	*	*	*	*	148	3
PAOZZ	2530-740-9553	RING,WIPER: HUB BEARING OIL SEAL 7979766 (19207)	A	EA	2	*	*	*	*	148	4
PAOZZ	2520-740-9550	SEAL,PLAIN,ENCASED:SEAT BEARING 7409550 (19207)	A	EA	2	*	*	*	*	148	5
PAOZZ	3110-198-1468	CONE AND ROLLERS, TAPERED 712286 (21450)	A	EA	2	*	*	*	*	148	6
PAOZZ	5306-740-9608	BOLT, MACHINE: SPRING SEAT 7409608 (19207)	A	EA	4	*	*	*	*	148	7
PAOZZ	5310-820-6653	WASHER,LOCK: SPRING SEAT MS35338-55 (96906)	A	EA	4	*	*	*	*	148	8
PAOZZ	2510-741-8773	SEAT ASSEMBLY, BEARING CUP: 7418773 (19207)		EA	2	*	*	*	*	148	9
PAOZZ	3110-142-4390	CUP,TAPERED ROLLER BEARING: 706691 (12742)	A	EA	2	*	*	*	*	148	10
PAOZZ	3110-100-0649	CONE AND ROLLERS, TAPERED: 705155 (12742)	A	EA	2	*	*	*	*	148	11
PAOZZ	5310-353-2297	NUT,PLAIN,OCTAGON: 7409606 (19207)	A	EA	2	*	*	*	*	148	12
PAOZZ	5310-700-7089	WASHER, KEY:SEAT NUT 5139123 (19207)	A	EA	2	*	*	*	*	148	13
PAOZZ	5310-353-2427	NUT,PLAIN,OCTAGON: 7346885 (19207)	A	EA	2	*	*	*	*	148	14



AT 47267

Current part is item (3) on diagram. Available at www.oshkoshequipm

Figure 148. Rear spring seat and bearing.

Current part is item (3) on diagram. Available at www.oshkoshequipm